



Cardiac pacemakers in medicine

Pacemakers and cardioinhibitory syncope



Cardioinhibitory syncope



Range of triggers

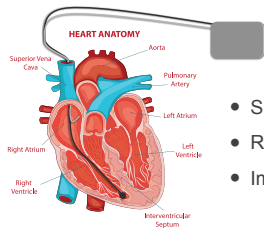
Common element



- Blood pressure ↓
- Heart rate ↓
- Both ↓↓



How can a pacemaker help?



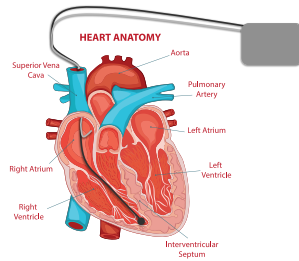
- Specialized algorithms
- Rate drop
- Impedance changes

Detection

Therapy



- Cardiac Output = Stroke Volume x Heart Rate
- Pacemaker increases heart rate
- Increases blood flow to the brain



Dual-chamber pacemaker

Takeaway message



Dual Chamber Pacemakers are used to treat cardioinhibitory syncope. However you **MUST** ensure it has a **specialist setting** that **not all devices** have!